

INVESTOR UPDATE: Evolution, Innovation and Connected Medicine

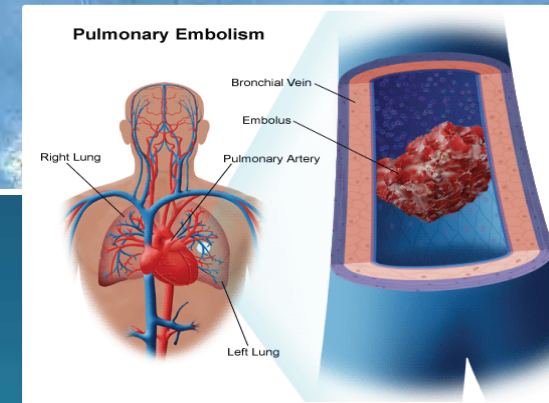
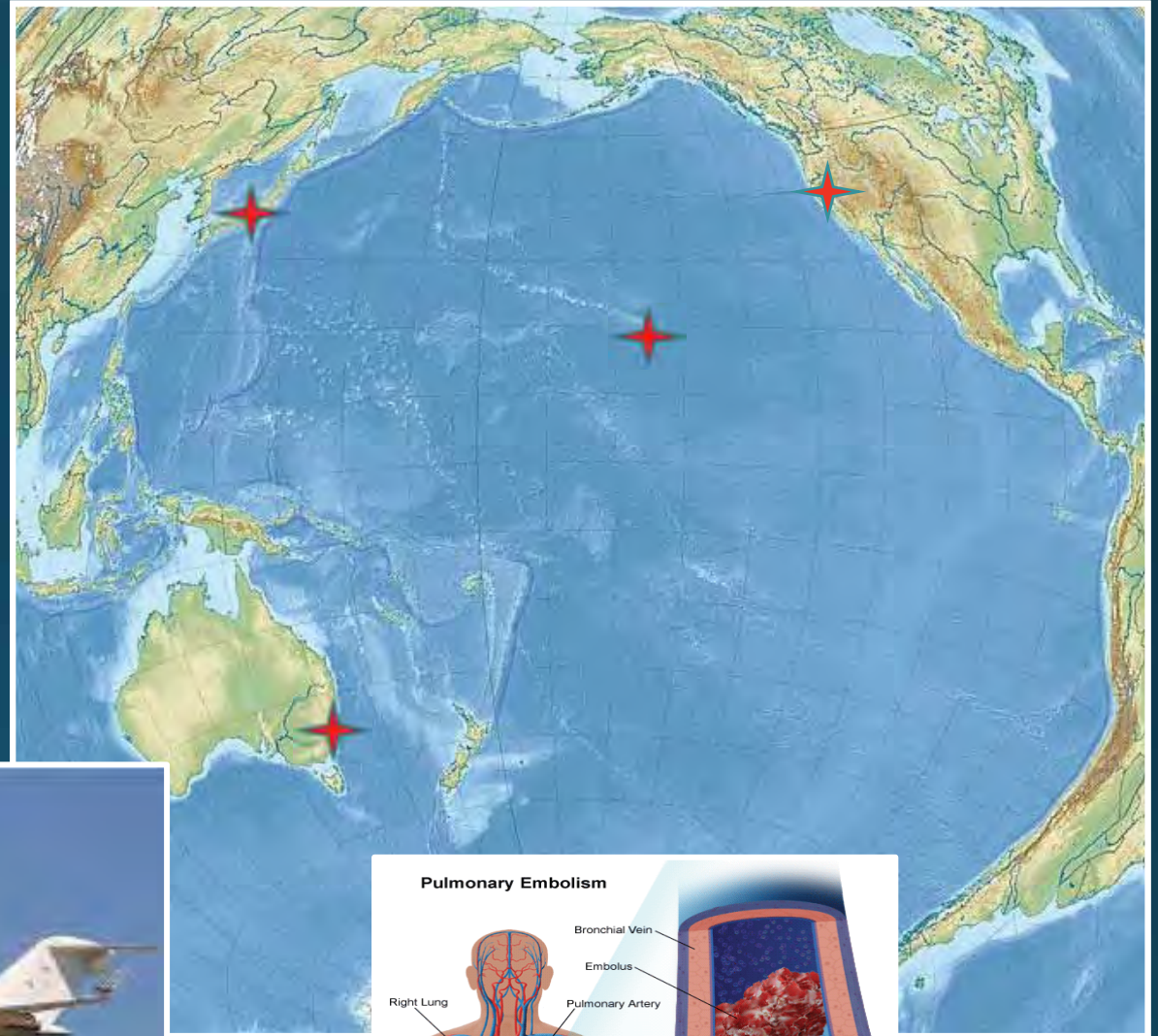


Impact Investing
July 30, 2014



Traditional Solution: Inadequate

- Discontinuous
- No easy MD access
- Lethal
- Costly



Life-Saving Crisis Intervention

- 24/7 Immediate On-Call Physician
- Secure access to records
- Immediate Treatment Capability
- Global Medical Planning
- Global Medical Evacuation



Carroll/Blacklight/Photo
A partner Walter J. Hassen reflects on how a call to a WorldClinic doctor in Burlington may well have saved his life when he suffered a heart attack while in China on business.

He owes his life to a call from Beijing to Burlington

Managing Serious Disease to an Optimal Outcome

- Specialist Advisory Board for complex disease management
- Complete Case Continuity
- No Conflict of Interest



MEMORIAL SLOAN-KETTERING
CANCER CENTER

Connected Medicine= Business As Planned

- 24/7 Immediate On-Call Physician
- Immediate Treatment Capability
- Complete Case Continuity



Connected Executive Healthcare

- Connected monitoring of chronic disease
- Personal Longevity Plan
- Global Medical Planning
- Complete case continuity



Q: What's Comes Next? A: Medical Mission Control

Innovation to better care with:

- Technology
- Validated best practices
- Data –driven care
- Prevention and wellness
- Continuity



Value Proposition

- Health is the #1 asset
- Broadens advisor role
- Innovative, appealing, tangible
- Investment



BEST PRACTICE CHECKLIST

The New
Standard of Care

Best Practices

- 24/7 Immediate On Call Physician**
Connect directly, by phone or video to a board certified doctor who answers immediately and responds decisively
- Secure 24/7 Access to Centralized Records**
All medical records collected, reviewed and summarized with 24/7 access
- Immediate Treatment Capability**
On Call Physician diagnosis and treatment with personal prescription medical kit for acute, urgent and time sensitive care
- Global Medical Planning**
Customized medical risk preparation including knowledge about local physicians and hospitals
- Specialist Advisory Board for Complex Disease Management**
Individual case review with top specialist referrals , facilitated appointments and follow up through resolution
- Complete Case Continuity**
All events are documented and actively tracked to completion with summarized results shared with participating caregivers.
- No Conflict of Interest**
Physicians have no fiscal conflict of interest with regard to referrals, treatment or testing
- Connected Monitoring of Chronic Disease**
Use of personal monitoring devices to provide data for maintaining stability
- Personal Longevity Plan**
A scheduled, formal prevention plan to maximize personal health and lifespan
- Global Medical Evacuation**
Rapid medical evacuations to home hospital, free of fiscal conflict of interest, and closely monitored
- Board Certified Physicians**
On Call Physicians who are experienced and Board Certified in Emergency Medicine